

NEW MEXICO

WOMEN'S CULTURAL CORRIDOR

We offer generous thanks to the following institutions and photographers for the use of their images: Donald Woodman, Through the Flower; Yale Collection of American Literature, Beinecke Rare Book and Manuscript Library, Yale University; Millicent Rogers Museum; Louise Dahl-Wolf, *Harper's Bazaar*; Mark Sublette Medicine Man Gallery, Tucson, Arizona and Santa Fe, New Mexico.



Through the Flower is a non-profit, 501(c)(3) donation supported feminist art organization founded by Judy Chicago, and located in Belen, an historic railroad town along the Rio Grande River. The nearby Belen Hotel and the Harvey House Museum are on the National Register of Historic Places, and Through the Flower Art Space serves the local community as a cultural anchor for the Belen Arts District. Belen is located 30 miles south of Albuquerque on I-25 by car, or the Rail Runner runs from Santa Fe and Albuquerque to Belen daily.

THROUGH THE FLOWER ART SPACE

107 Becker Avenue, Belen, NM 87002
Thursday through Saturday, 12-5 PM or by appointment
Office: 505-864-4080 • Art Space: 505-503-1955
www.throughtheflower.org • info@throughtheflower.org

OUR MISSION

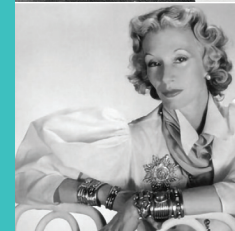
To educate a broad public about the importance of art and its power in countering the erasure of women's achievements.

NEW MEXICO

WOMEN'S CULTURAL CORRIDOR

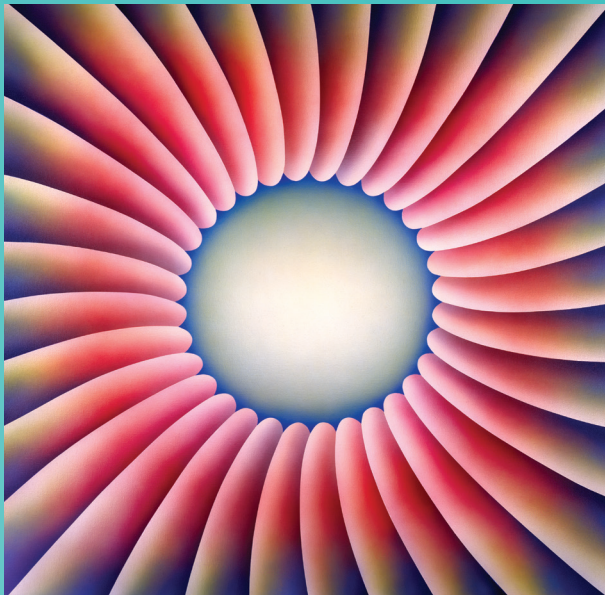


JUDY CHICAGO
MABEL DODGE LUHAN
AGNES MARTIN
MARIA MARTINEZ
GEORGIA O'KEEFFE
MILLCENT ROGERS



Discover the wealth of imagination invested in New Mexico by women of timeless talent. Travel the **New Mexico Women's Cultural Corridor** through Belen, Albuquerque, Santa Fe, Abiquiu, and Taos in search of Judy Chicago, Mabel Dodge Luhan, Agnes Martin, Maria Martinez, Georgia O'Keeffe, and Millicent Rogers.

The New Mexico Women's Cultural Corridor is a program of Through the Flower, a non-profit feminist art organization founded by Judy Chicago. Our mission is to educate a broad public about the importance of art and its power in countering the erasure of women's achievements. Our programs reflect the core values of Through the Flower: cooperation, recognition, creativity, empathy, and diversity.



BELEN

Through the Flower Art Space

Through the Flower Art Space celebrated its grand opening July 20, 2019 and is now open to the public. Through the Flower Art Space houses a permanent exhibition dedicated to the history of Judy Chicago. The Art Space features changing feminist art exhibitions sponsored by Through the Flower, a book and video library, gift shop, and resource center. The resource center includes computers with links to useful online material including access to the Judy Chicago Research Portal. Through the Flower Art Space regularly hosts educational programs and events. Through these dynamic exhibitions, educational resources, and supporting programs, Through the Flower Art Space connects visitors with cultural institutions across the U.S. Hours of operation are Thursday through Saturday, 12 pm until 5 pm, or by special appointment.

Call 505-503-1955 or email info@throughtheflower.org
www.throughtheflower.org
 107 Becker Avenue, Belen, NM 87002

TOME/LOS LUNAS



University of New Mexico Valencia Campus Library

Through the Flower's library of over 2,100 books by and about women and women's achievements was presented in 1996 to the UNM Valencia Campus Library where it is housed in its own area.

Contributions to the collection are ongoing.

Email: unmvclib@unm.edu
 280 La Entrada Road, Los Lunas, NM 87031

ALBUQUERQUE

University of New Mexico Art Museum

The University of New Mexico Art Museum is a free, public museum located within the Center for the Arts along with Popejoy Hall. The UNMAM's comprehensive teaching collection of over 30,000 art objects is the largest collection of artwork in the state. Works by Judy Chicago can be available for study to curators, scholars, and students with advanced notice and by appointment.

www.artmuseum.unm.edu
 203 Cornell Drive, Albuquerque, NM 87106



UNIVERSITY of
NEW MEXICO
ART MUSEUM

Albuquerque Museum

As part of the museum's permanent collection, Judy Chicago's Power Play work titled *Woe Man* is currently on view in the "Common Ground" installation along with other works from artists within the region including, but not limited to Georgia O'Keeffe. Through the Flower gifted the Albuquerque Museum a selection of *Birth Project* works made in a variety of needle and textile techniques that can be viewed by curators, scholars, and students by appointment only with advanced notice.

www.cabq.gov/museum
 2000 Mountain Road NW, Albuquerque, NM 87104



ALBUQUERQUE MUSEUM

SANTA FE

Georgia O'Keeffe Museum

The only art museum in the world dedicated to an internationally renowned woman artist, Georgia O'Keeffe (1887-1986). The collection of over 1000 works by O'Keeffe is the world's largest. Visits to the Research Center nearby and O'Keeffe's home in Abiquiu are offered, along with changing exhibitions focused on Modernism.

www.okeeffemuseum.org
 217 Johnson Street, Santa Fe, NM 87501



ABIQUIU



Georgia O'Keeffe Home & Studio

Seasonal one-hour tours with groups of no more than twelve people are offered by the O'Keeffe Museum. Reserve well in advance. The Ghost Ranch Conference Center offers short scenic tours of the nearby landscape claimed by O'Keeffe in her art.

www.okeeffemuseum.org
www.ghost ranch.org
 21120 US 84, Abiquiu, NM 87510

TAOS



Mabel Dodge Luhan Home

Mabel Ganson Dodge (1879-1962), an adventurous heiress from Buffalo, New York, held a progressive salon in Manhattan and traveled extensively before moving to Taos in 1916. With her second husband, Native American Tony Luhan, she built a 22-room house to attract visitors such as Georgia O'Keeffe, D. H. Lawrence, Ansel Adams, Paul Strand, Laura Gilpin, Willa Cather, Mary Austin, and Jean

Toomer. Her four-volume autobiography details her life as a cultural activist. Listed on the National Register of Historic Places, the home is now a bed and breakfast inn.

www.mabeldodgeluhan.com
 240 Morada Lane, Taos, NM 87571

Millicent Rogers Museum including the Maria Martinez Family Collection



Millicent Rogers (1902-1953) moved to Taos in 1947. She used her inherited wealth and social standing to lobby successfully for protections of Native American cultural heritage. Her legacy as a collector and patron is the Millicent Rogers Museum. Housed in a renovated residence, its collection includes Native American work in many media, Hispanic devotional art, and Northern New Mexico textiles, metalwork, and contemporary crafts.

The Martinez-Da family of legendary San Ildefonso Pueblo potter Maria Martinez (circa 1887-1980) selected the Millicent Rogers Museum to own the major collection of work by Maria Martinez and her family. To enhance the collection acquired by the Museum in 1984, the family donated photographs and memorabilia.

www.millicentrogers.org
 1504 Millicent Rogers Road, Taos, NM 87571

Agnes Martin Gallery University of New Mexico Harwood Museum of Art



Often seen as a Minimalist, Agnes Martin (1912-2004) considered herself an Abstract Expressionist. Internationally admired for work with a Zen-like focus on the sublime, she originated a visual language of delicate grids and a muted palette. Canadian born, she became a U.S. citizen and moved to New Mexico in 1954. She lived in New York from 1957-1967, and then returned permanently to New Mexico. Seven paintings comprise a small gallery in her honor at the Harwood Museum of Art.

www.harwoodmuseum.org
 238 Ledoux Street, Taos, NM 87571