



BIRTH PROJECT

WORKS AND CURRENT LOCATIONS

Needlework in all its forms was 'women's work,' and as long as I was compelled to deny my identity as a woman in my life and in my work I never considered it as a medium for art-making. It would have been humiliating to me if a male artist or dealer discovered me sewing a button on my artist husband's shirt or sitting at the embroidery machine or a loom. It would have confirmed the already taken-for-granted idea that my place in life was either supporting my husband's aspirations or working in the 'minor arts.'...

This not to suggest that I believe the value judgments assigned to 'art' versus 'craft' are right or just but rather to define the background of aesthetic assumptions against which I developed as an artist. If hiding my womanly feelings and eschewing all womanly skills would guarantee my participation in the art community then that is what I would do.

-- Judy Chicago, Birth Project, Doubleday, 1985

Through the Flower
www.throughtheflower.org

Creation of the World, Quilt 1

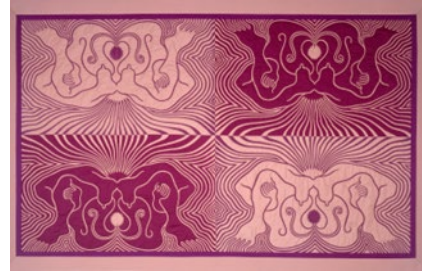


Drawing and color specifications by Judy Chicago
Quilting, applique and embroidery by Sally Babson

Current Location

Herbert F. Johnson Museum
Cornell University Ithaca, NY

The Crowning Quilt 5



Drawing and color specifications by Judy Chicago
Reverse applique and quilting
by Jacquelyn (Moore) Alexander

Current Location

Florida State University Museum of Fine Arts
Tallahassee, FL

Creation of the World Embroidery 9/9



Embroidery by Catherine Russo

Current Location

Scarfone/Hartley Gallery
University of Tampa
Tampa, FL

Birth Tear Embroidery 2



Drawing and color specifications by Judy Chicago
Embroidery by Jane Gaddie Thompson

Current Location

Private Collection

Birth Embroidery 2



Drawing ink on silk by Judy Chicago
Embroidery over drawing by Pamela Nesbit

Current Location

Florida State University Museum of Fine Arts
Tallahassee, FL



Hand painting on silk and color specifications by
Judy Chicago
Embroidery by Pamela Nesbit

Current Location

Private Collection



Hand painting on silk and color specifications by
Judy Chicago
Embroidery by Pamela Nesbit

Current Location

Florida State University Museum of Fine Arts
Tallahassee, FL

Birth Goddess Embroidery 3



Hand painting on silk and color specifications by
Judy Chicago
Embroidery by Pamela Nesbit

Current Location

Through the Flower
Belen, NM

Creation of the World Quilt 2



Sprayed painting by Judy Chicago
Quilting and embroidery by Judy Kendall

Current Location
Virginia Museum of Fine Arts
Richmond, VA

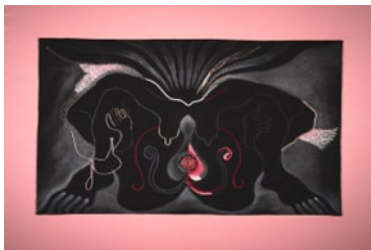
The Crowning Quilt 4/9



Drawing, hand painting, and color specifications
by Judy Chicago
Batiks from Chicago's drawing by Diane Barber
Applique, quilting, and embroidery by Helen
Cohen

Current Location
Through the Flower
Belen, NM

The Crowning Q2 Quilt Mockup



Airbrush painting, border design and color
specifications by Judy Chicago
Needlework samples by members of Chico Group

Current Location
Through the Flower
Belen, NM

Guided by the Goddess



Painting and color specifications by Judy Chicago
Embroidery and pulled thread work by Marjorie
Smith

Current Location
Hartford Seminary
Hartford, CT

Birth Garment 7: Fingered by Nature



Drawing on linen, color specifications, and pattern
by Judy Chicago
Embroidery over Chicago's drawing by Mary
Burke

Current Location
The Albuquerque Museum
Albuquerque, NM

Birth Garment 5: All Laced Up



Pattern and color specifications by Judy Chicago
Garments fabricated by Sally Babson

Current Location
University of North Texas
Denton, TX

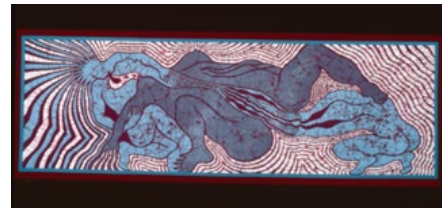
Birth Garment 6: Golden Girl



Pattern and color specifications by Judy Chicago
Garments fabricated by Sally Babson

Current Location
University of North Texas
Denton, TX

Birth Trinity Quilt 2 Batik



Pattern and color specifications by Judy Chicago
Batik from Chicago's drawing by Dianne Barber
Quilting by Judith Meyers

Current Location
Private Collection

The Crowning Needlepoint 3



Hand painting by Judy Chicago with Lynda Healy
Needlework by Kathryn Hass Alexander

Current Location

Florida State University Museum of Fine Arts
Tallahassee, FL

Birth Garment 3: Calico Kitten

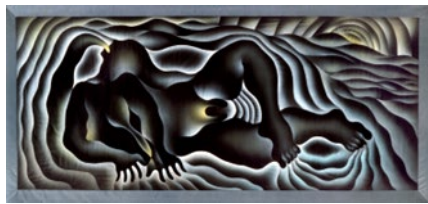


Design and fabric selection by Judy Chicago
Quilting by Carol Strittmatter
Garment fabrication by Sally Babson

Current Location

Masterson Branch; YWCA
Houston, TX

Earth Birth Quilt 5



Painting on Fabric by Judy Chicago
Quilting by Jacqueline (Moore) Alexander

Current Location

Private Collection

The Crowning Quilt 6



Drawing, hand painting, and color specifications
by Judy Chicago
Batiks from Chicago's drawings by Dianne Barber
Quilting, embroidery, and embellishment by
Martha Sanford, coordinator Katherine Ahrens,
Geraldine Boruta, Judy Bennor, Lili Church,
Floralyn Flory, Nancy Galloway, Connie Greany,
Mary Ellen Kelly, Audrey Schmitt, and Anne
Wardell

Current Location

Through the Flower
Belen, NM

Creation of the World Embroidery 1



Drawing for stencil, hand drawing on fabric, and color specifications by Judy Chicago
Stenciling by Eileen Gerstein
Embroidery over Chicago's drawing by Pamela Nesbit

Current Location

Pennsylvania Academy of Fine Arts
Philadelphia, PA

Creation of the World Needlepoint 3



Painting on 24" mesh canvas and color specifications by Judy Chicago
Needlework over Chicago's drawing by Lael Cohen

Current Location

Zimmerli Art Museum
Rutgers University
New Brunswick, NJ

Birth Trinity Needlepoint



Full-scale black and white drawing, color study drawing, and color specifications by Judy Chicago
Needlework on 6" mesh canvas by Susan Bloomenstein with Elizabeth Colten, Karen Fogel, Helene Hirmes, Bernice Levitt, Linda Rothenberg, and Miriam Vogelmann

Current Location

Private Collection

Birth Needlepoint



Painting, drawing, and color specifications by Judy Chicago
Needlepoint by Joyce Gilbert, coordinator Jo Chester, Peggy Patton, Carol Strittmatter, and Karin Telfer

Current Location

Dennos Museum Center
Northwest Michigan College
Traverse City, MI

The Crowning Quilt 9/9



Drawing, hand painting and color specifications by
Judy Chicago
Batik from Judy Chicago's drawing by Dianne
Barber
Applique, quilting and embroidery by Gwen
Glesmann

Current Location
Birth Rites Collection
London, United Kingdom

Creation of the World Embroidery 2/9



Drawing and color specifications by Judy Chicago
Silkscreen from Chicago's drawing by Shari Knapp
Embroidery by Dina Broyde

Current Location
Dennos Museum Center
Northwest Michigan College
Traverse City, MI

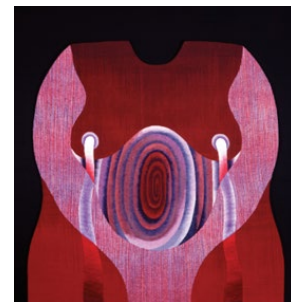
Creation of the World Embroidery 6/9



Drawing and color specifications by Judy Chicago
Silkscreen from Chicago's drawing by Shari Knapp
Embroidery by Christine Hager

Current Location
Dennos Museum Center
Northwest Michigan College
Traverse City, MI

Birth Garment 1: Pregnant Amazon



Design and full scale painted mock-up by Judy
Chicago Dyeing, weaving, and needlepoint by
Helen Courvoisie, MD.
Garment fabrication by Sally Babson

Current Location
The Albuquerque Museum
Albuquerque, NM

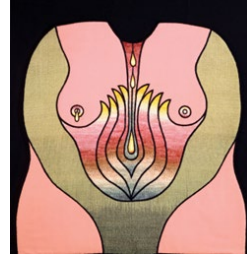
**Birth Garment 1: Pregnant Amazon,
mock-up**



Design and full scale painted mock-up by Judy Chicago

Current Location
The Albuquerque Museum
Albuquerque, NM

Birth Garment 2: Flowering Shrub



Design and full scale painted mock-up by Judy Chicago
Spinning, weaving, dyeing, and needlepoint by Penny Davidson
Embroidery outline and garment fabrication by Sally Babson

Current Location
The Albuquerque Museum
Albuquerque, NM

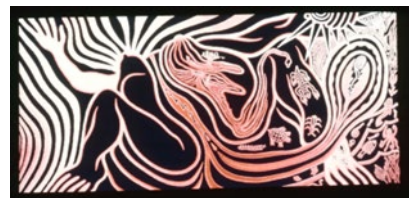
Birth Garment 2: Flowering Shrub, mock-up



Design and full scale painted mock-up by Judy Chicago

Current Location
The Albuquerque Museum
Albuquerque, NM

Creation of the World Embroidery 7/9



Drawing and color specifications by Judy Chicago
Silkscreen from Chicago's drawing by Sheri Knapp
Embroidery by Jan Kinney

Current Location
Special Collections and College Archives,
Musselman Library
Gettysburg College
Gettysburg, PA

Hatching of the Universal Egg Embroidery 4



Line drawing on silk and color specifications by
Judy Chicago
Reverse applique, cording, and embroidery by
Pippa Davies

Current Location

University of Canterbury at Christchurch
Christchurch 6
New Zealand

Thou Art the Mother Womb Embroidery 1

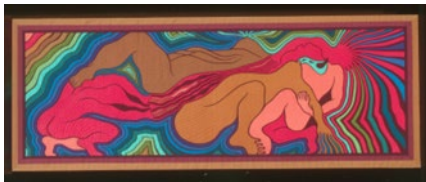


Color study, line drawing on silk, and color
specifications by Judy Chicago
Embroidery by Ann Gibson

Current Location

The Arthur and Elizabeth Schlesinger Library on
the History of Women in America
Schlesinger Library Radcliffe Institute for
Advanced Study -
Harvard University Cambridge, MA

Birth Trinity Quilt 1



Drawing and color specifications by Judy Chicago
Reverse applique by Barbara Velazquez
Quilting by Ann Raschke and Jacquelyn Moore

Current Location

Herbert F Johnson Museum
Cornell University
Ithaca, NY

The Crowning Needlepoint 5



Painting on 18" mesh canvas by Judy Chicago and
Linda Healy
Needlepoint over Chicago's painting by Marian
Ingraldi LoBiondo, Maria LoBiondo, Sharon
LoBiondo-Lesins, and Jan Biondo

Current Location

Private Collection

Myth Quilt 1

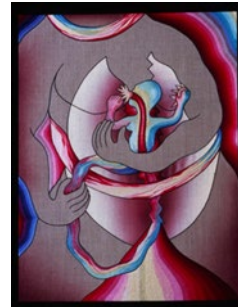


Drawing and color specifications by Judy Chicago
Quilting and applique by Jane Dadey
Border by Sally Babson

Current Location

Private Collection

Hatching of the Universal Egg 2



Prisma color pencil and sprayed paint on linen by
Judy Chicago
Embroidery by Mary Ann Hickey

Current Location

Private Collection

Creation of the World Petit Point 2



Drawing on silk mesh, border design, and color
specifications by Judy Chicago
Petit point by Jean Berens

Current Location

Through the Flower
Belen, NM

Birth Garment 4: Great American Mother



Design and color specifications by Judy Chicago
Quilting by Linda Gaughenbaugh
Garment fabricated by Sally Babson

Current Location

University of New Mexico Art Museum
Albuquerque NM

Childbirth in America/Crowning Quilt 2/9



Drawing, hand-painting, and color specifications
by Judy Chicago

Batiks from Chicago's drawing by Diane Barber
Embroidery and Quilting by Hope Wingert

Current Location
Through the Flower
Belen, NM

Childbirth in America/Crowning Quilt 8/9

Drawing, hand-painting, and color specifications
by Judy Chicago

Batik from Chicago's drawing by Diane Barber
Embroidery and quilting by Rebecca Hanner

Current Location
Through the Flower
Belen, NM

Childbirth in America/Crowning Quilt 7/9



Drawing, hand-painting, and color specifications
by Judy Chicago

Batik from Chicago's drawing by Diane Barber
Embroidery and quilting by Rebecca Hanner

Current Location
Through the Flower
Belen, NM

**Creation of the World Embroidery 5
(Unfinished)**

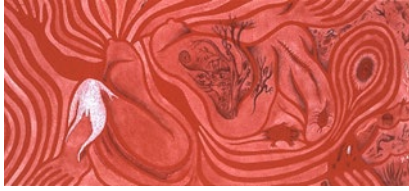


Drawing, hand-painting, and color specifications
by Judy Chicago

Batik from Chicago's drawing by Diane Barber
Embroidery and quilting by Nora Bullock

Current Location
Private Collection

Creation of the World Embroidery 6 (Unfinished)



Drawing on wool and inscription by Judy Chicago
Stencilling on wool by Eileen Gerstein
Unfinished embroidery by Florence Whisenant

Current Location
Through the Flower
Belen, NM

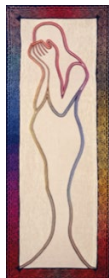
Birth Garment 8: Whitework Wanda



Line drawing, pattern, and color for weaving by
Judy Chicago
Needlepoint by Tere Jensen
Pulled thread work by Leight Heller
Weaving by Deborah Carlson
Garment fabrication by Sally Babson

Current Location
Dennos Museum Center
Northwest Michigan College,
Traverse City, MI

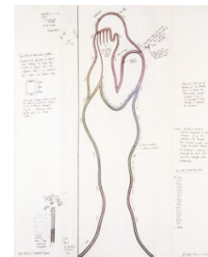
Birth Figure 6: Smocked Figure



Prismacolor pencil and graphite drawing on rag
paper, design, and color specifications by Judy
Chicago
Smocking and embroidery by Mary Ewanowski

Current Location
Through the Flower
Belen, NM

Birth Figure 6: Smocked Figure, Study



Prismacolor pencil and graphite drawing on rag
paper, design, and color specifications by Judy
Chicago
Smocking and embroidery by Mary Ewanowski

Current Location
Through the Flower
Belen, NM

Swaddled by Nature



Drawing for execution in weaving techniques by
Judy Chicago
Research and woven bands by Jan Cox Harden

Current Location

Florida State University Museum of Fine Arts
Tallahassee, FL

Creation of the World Embroidery 3/9



Drawing and color specification by Judy Chicago
Silkscreen from Chicago's drawing by Sheri Knapp
Embroidery by Merrily Rush Whitaker

Current Location

Through the Flower
Belen, NM

Hatching of the Universal Egg Embroidery 5: Birth Power



Prismacolor pencil study on vellum, line drawing
on silk, and color specifications by Judy Chicago
Embroidery by Sandie Abel

Current Location

Through the Flower
Belen, NM

Hatching of the Universal Egg Embroidery 5: Birth Power, needlework translation sample



Prismacolor pencil study on vellum, line drawing
on silk, and color specifications by Judy Chicago
Embroidery by Sandie Abel

Current Location

Through the Flower
Belen, NM

Study for Hatching of the Universal Egg Embroidery 5: Birth Power



Prismacolor pencil study on vellum by Judy Chicago

Current Location
Through the Flower
Belen, NM

Creation of the World Needlepoint 2



Painting on 18" mesh canvas by Judy Chicago
Needlework over Chicago's drawing by Gerry Melot

Current Location
Florida State University Museum of Fine Arts
Tallahassee, FL

Birth Trinity Special Technique 4: Filet Crochet



Drawing and color specifications by Judy Chicago
Filet Crochet by Marha Waterman

Current Location
de Young Museum,
San Francisco, CA

The Crowning Needlepoint 4



Painting on 18" mesh canvas by Judy Chicago with
Lynda Healy
Needlepoint by Fran Lyon Yablonsky

Current Location
Private Collection

**Hatching the Universal Egg Embroidery 7:
The Egg That Hatched Itself**



Drawing and color specifications by Judy Chicago
Embroidery over Chicago's drawing by Kathy
Lenhart

Current Location
Private Collection

Creation of the World Embroidery 8/9



Drawing and color specifications by Judy Chicago
Silkscreen from Chicago's drawing by Shari Knapp
Embroidery by Franny Minervini-Zick

Current Location
Middlebury College Museum of Art,
Mahaney Center for the Arts,
Middlebury, VT

Beaded Birth Tear



Ink and acrylic study on rag paper by Judy Chicago
Beadwork by Dee Thompson

Current Location
UCLA Armand Hammer Museum and Cultural
Center
Los Angeles, CA

**Hatching the Universal Egg Embroidery--
Egg/Her**



Drawing and painting on antelope skin by Judy
Chicago
Embroidery by Pamela Nesbit
Antelope skin appliqued to velvet by Sally Babson

Current Location
Private Collection

**Captured by the Species Burden
Embroidery 2**



Graphite, ink, and prismacolor study on vellum,
line drawing on silk, and color specifications by
Judy Chicago
Embroidery by Susan Fisher

Current Location

Arizona State University Museum, J. Russell and
Bonita Nelson Fine Arts Center
Arizona State Univ. Tempe Campus
Tempe, AZ

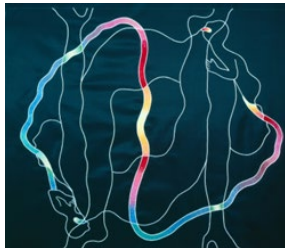
**Captured by the Species Burden
Embroidery 2, Study**

Graphite, ink, and prismacolor study on vellum,
line drawing on silk, and color specifications by
Judy Chicago

Current Location

Arizona State University Museum, J. Russell and
Bonita Nelson Fine Arts Center
Arizona State Univ. Tempe Campus
Tempe, AZ

**Captured by the Species Burden
Embroidery 1**



Current Location
Mills College Art Museum
Oakland, CA

Creation of the World Petit Point 1



Drawing on silk mesh, border design, and color
specifications by Judy Chicago
Petit point over Chicago's Drawing by Ronda
Gerson

Current Location
Private Collection

Birth Tear Embroidery 3



PrismaColor pencil study on rag paper with translation sample in same fram, drawing on silk, and color specifications by Judy Chicago
Blended outline embroidery by Rae Atira-Souea
Body and background by Kate Cloudsparks

Current Location

Krannert Art Museum and Kinkead Pavilion
University of Illinois at Urbana
Champaign, IL

The Crowning Needlepoint 1



Painting on 18" mesh canvas by Judy Chicago
Needlepoint over painting by Susan MacMillan
Petaluma, Janis Wicks, Maggie Eoyang, and
Jeaneette Russell

Current Location

Richard L. Nelson Gallery and Fine Arts Collection
University of California Davis
Davis, CA

Mother India



Painting on fabric and border design by Judy
Chicago with Judith Meyers
Applique panels with Jacquelyn Moore,
Embroidered panels by Judy Kendall
Mirrored strips embroidered by Judith Meyers,
coordinator with Norma Cordiner, Sharon Fuller,
Susan Herold, Peggy Kennedy, Linda Lockyer,
Lydia Ruyle and Ruth Savig (greely CO)

Current Location

Through the Flower
Belen, NM

Birth Filet Crochet



Drawing and color specifications by Judy Chicago
Filet Crochet by Dolly Kaminski

Current Location

Through the Flower
Belen, NM

Birth Special Technique 1, Needlework sample and drawing



Drawing and color specifications by Judy Chicago
Filet Crochet by Dolly Kaminski

Current Location
Albuquerque Museum
Albuquerque, NM

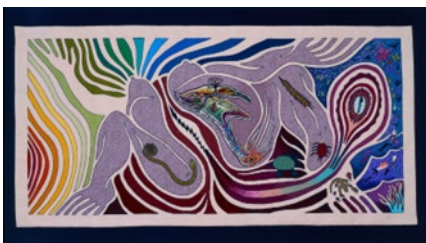
Birth Certificate



Painting on linen and color specifications by Judy
Chicago
Embroidery by Barbara Amelia Nace
Applique and additional embroidery by Sally
Babson

Current Location
Martin Art Gallery
Baker Center for the Arts
Muhlenberg College
Allentown, PA

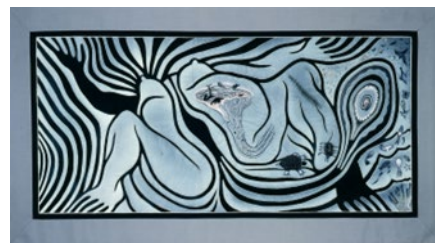
Creation of the World Needlepoint 1



Painting on 18" mesh canvas by Judy Chicago
Needlepoint by Helen Eisenberg and Mickey
Lorber

Current Location
University of New Mexico Art Museum
Albuquerque, NM

Creation of the World Quilt 3



Airbrush and drawing on fabric and color
specifications by Judy Chicago
Embroidery by Jane Gaddie Thompson

Current Location
Law Warschaw Gallery; Macalester College
St. Paul, MN

Birth Joy



Drawing on fabric and color specifications by Judy Chicago
Embroidery by Sandie Abel

Current Location

City of Benicia
Benicia Public Library
Benicia, CA

Birth Goddess Embroidery 4



Painting on wool by Judy Chicago
Embroidery by Candis Duncan Pomkala

Current Location

Herbert F Johnson Museum
Cornell University
Ithaca, NY

Birth Embroidery 4/6



Drawing and color specifications by Judy Chicago
Silkscreened from Chicago's drawing by Sheri Knapp
Embroidery by Marcia Nowlan

Current Location

Special Collections and College Archives
Musselman Library
Gettysburg College Gettysburg, PA

Hatching of the Universal Egg Embroidery 3



Line drawing and spraypainting on silk, and color specifications by Judy Chicago
Embroidery by Kris Wetterlund

Current Location

St. Catherine University
St. Paul, MN

Birth Tear/Tear Special Technique 2



Drawing on fabric and color specifications by Judy Chicago

Macrame over drawings by Pat Rudy-Baese

Current Location

Private Collection

Birth Tear/Tear Special Technique 1, 2 Macrame Samples



Macrame over drawing on fabric by Pat Rudy-Baese

Current Location

Through the Flower
Belen, NM

Creation of the World Needlepoint 5



Painting on 18" mesh canvas and color specifications by Judy Chicago with Lynda Healy
Needlwork over Chicago's painting by Susan Hill

Current Location

Birth Rites Collection
London, United Kingdom

Myth Quilt 2



Design and color specifications by Judy Chicago
Applique and quilting by Sally Babson

Current Location

University of New Mexico Art Museum
Albuquerque, NM